

## M/V TRIUMPH IV

### • General

<b>Built</b>	<b>2004</b>
<b>Place of Build</b>	Vietnam
<b>Classification</b>	Veritas Register
<b>Port of Registry</b>	Giurgiulesti
<b>Flag</b>	Moldova
<b>P&amp;I Insurers</b>	Swiss Re International SE through EF MARINE
<b>DWT   DWTCC</b>	<b>7154   6900</b>
<b>Draft</b>	1.872 (meters)
<b>Length Overall</b>	102.79 (meters)
<b>Length Perpendiculars</b>	<b>94.5 (meters)</b>
<b>Breadth Moulded</b>	17 (meters)
<b>Depth Moulded</b>	8.8 (meters)
<b>Air Draft</b>	6914 (meters) (Full Ballast)
<b>GT</b>	4039
<b>NT</b>	2360
<b>Light Ship</b>	2160
<b>Derricks</b>	<b>4 x 15 tons</b>
<b>Suez Tonnage Certificate</b>	Available

### • Holds and Hatches

<b>Number of Holds</b>	2
<b>Number of Hatches</b>	2
<b>Single Deck</b>	Yes
<b>Grain/Bale Capacity</b>	<b>8807   8318</b>
<b>HOLD NO: 1 (m3)</b>	<b>4314   3927 (approx)</b>
<b>Dimensions (W x L x H)</b>	33.4 x 15.4 x 7
<b>Hatch No: 1</b>	10.2 x 23.2
<b>HOLD NO: 2 (m3)</b>	<b>4493   4391 (approx)</b>
<b>Dimensions (W x L x H)</b>	34 x 16.3 x 7
<b>Hatch No: 2</b>	10.2 x 25.6 (meters)
<b>Strengthened</b>	For Heavy cargo
<b>Hatch Covers Strength</b>	1.9 (mt/m <sup>2</sup> )
<b>Holds Ventilation</b>	<b>Yes, Electric</b>

### • Engines

<b>Engine Make And Type</b>	Hanshin LH41LA-61
<b>Max Output</b>	2648 kW   210 RPM
<b>Generators</b>	Yanmar 6LAAL-UTN

### • Speed and Consumption

<b>Eco Speed</b>	9 Knots Laden
<b>Sea Moving Consumption</b>	6.5 (metric tons) MGO
<b>Port Idle Consumption</b>	0.75 (metric tons) MGO
<b>Port Derrick Working Consumption</b>	1.5 (metric tons) MGO

### • Communication

<b>IMO</b>	9311555
<b>Call Sign</b>	ER2719
<b>MMSI</b>	214182719

### NOTE!

This document is confidential. It may also be privileged or otherwise protected by work product immunity or other legal rules. If you have received it by mistake, please let us know and delete it from your system; you may not copy this document or disclose its contents to anyone.



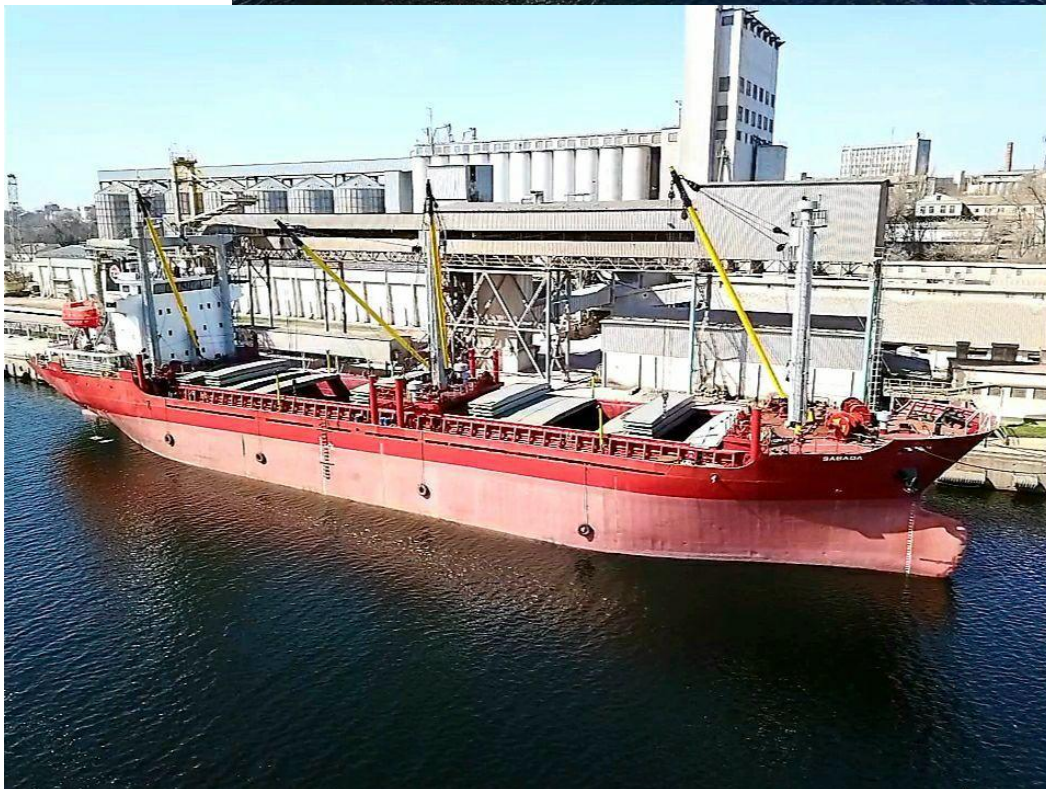
**NOTE!**

This document is confidential. It may also be privileged or otherwise protected by work product immunity or other legal rules. If you have received it by mistake, please let us know and delete it from your system; you may not copy this document or disclose its contents to anyone.



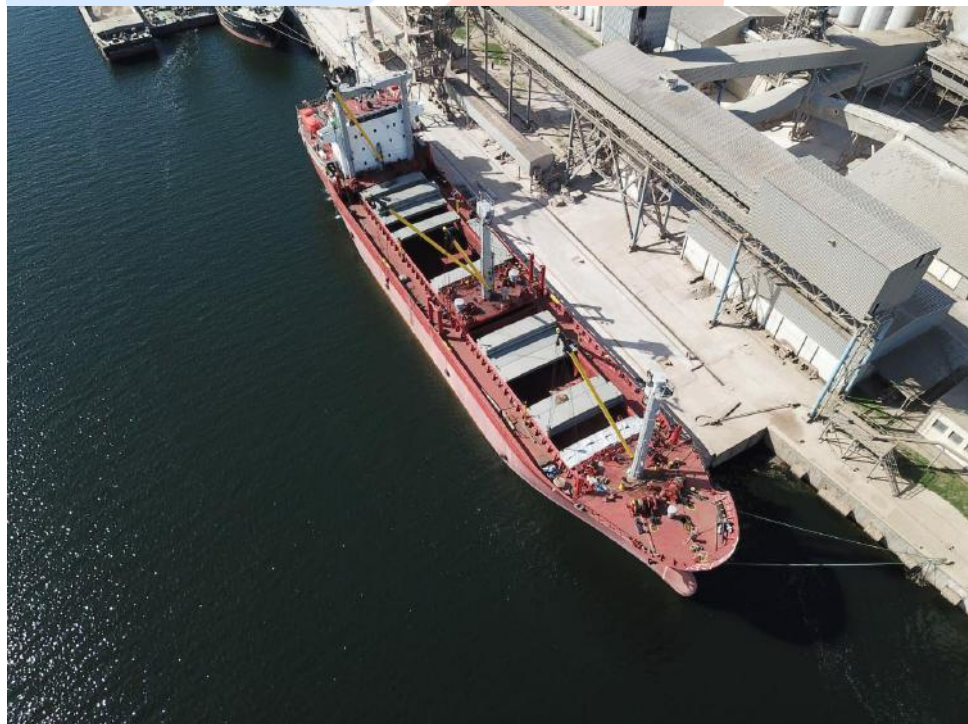
**NOTE!**

This document is confidential. It may also be privileged or otherwise protected by work product immunity or other legal rules. If you have received it by mistake, please let us know and delete it from your system; you may not copy this document or disclose its contents to anyone.



**NOTE!**

This document is confidential. It may also be privileged or otherwise protected by work product immunity or other legal rules. If you have received it by mistake, please let us know and delete it from your system; you may not copy this document or disclose its contents to anyone.

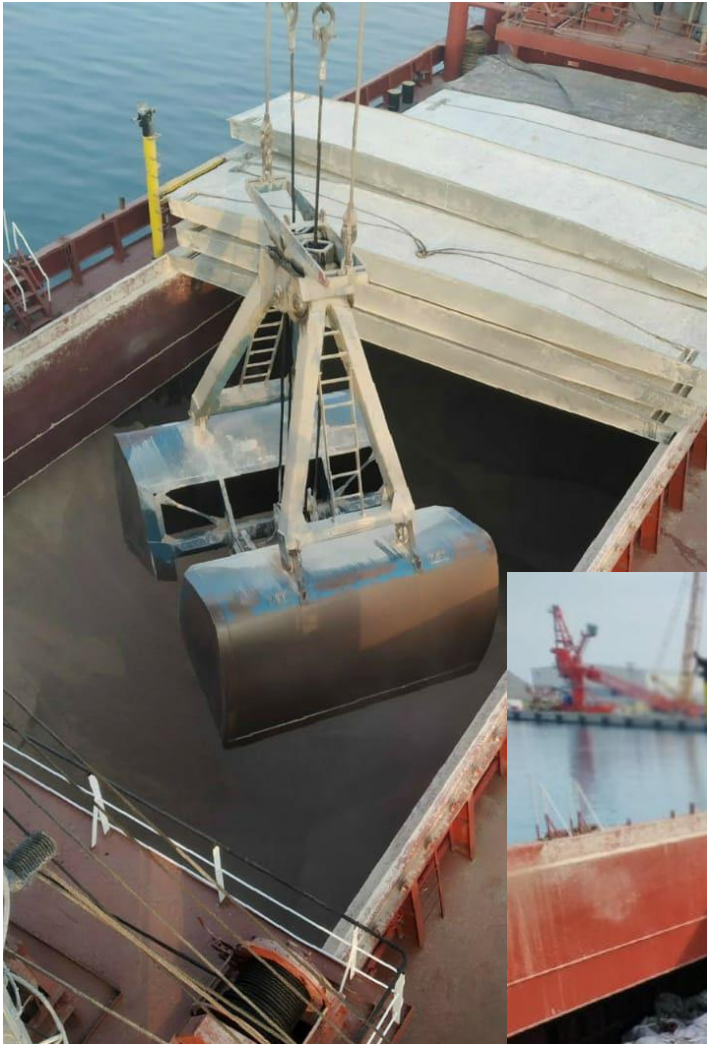


**NOTE!** This document is confidential. It may also be privileged or otherwise protected by work product immunity or other legal rules. If you have received it by mistake, please let us know and delete it from your system; you may not copy this document or disclose its contents to anyone.



**NOTE!**

This document is confidential. It may also be privileged or otherwise protected by work product immunity or other legal rules. If you have received it by mistake, please let us know and delete it from your system; you may not copy this document or disclose its contents to anyone.



**NOTE!**

This document is confidential. It may also be privileged or otherwise protected by work product immunity or other legal rules. If you have received it by mistake, please let us know and delete it from your system; you may not copy this document or disclose its contents to anyone.

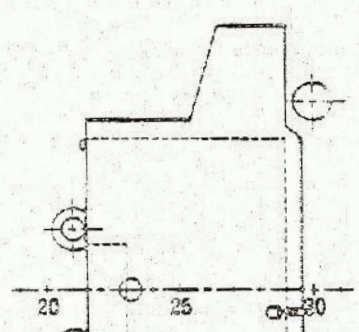


**NOTE!**

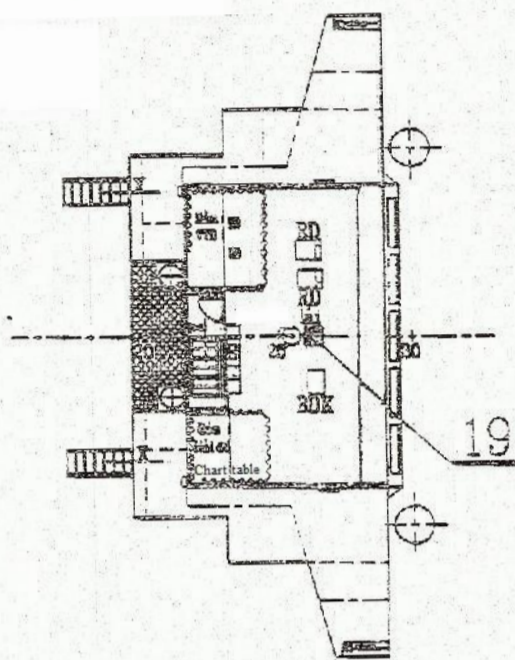
This document is confidential. It may also be privileged or otherwise protected by work product immunity or other legal rules. If you have received it by mistake, please let us know and delete it from your system; you may not copy this document or disclose its contents to anyone.



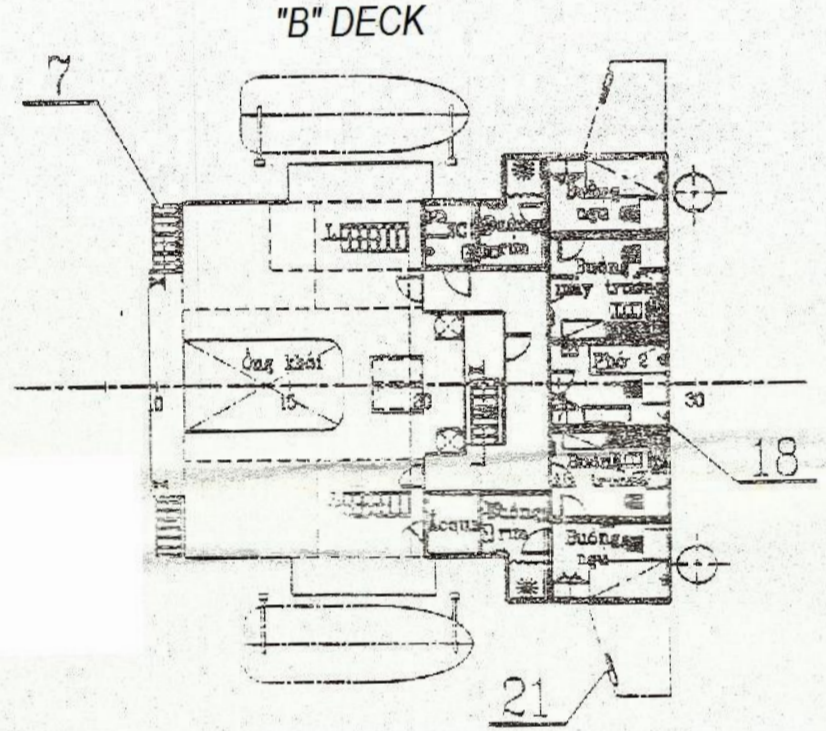
NÓC BUỒNG LÁI  
MONKEY ISLAND



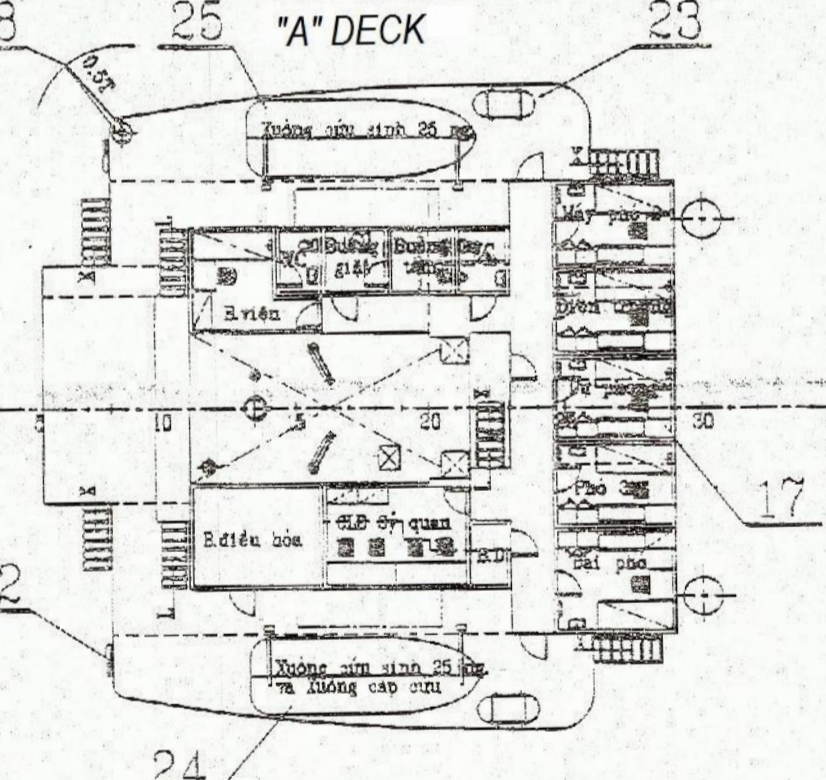
BUỒNG BUỒNG LÁI  
BRIDGE DECK



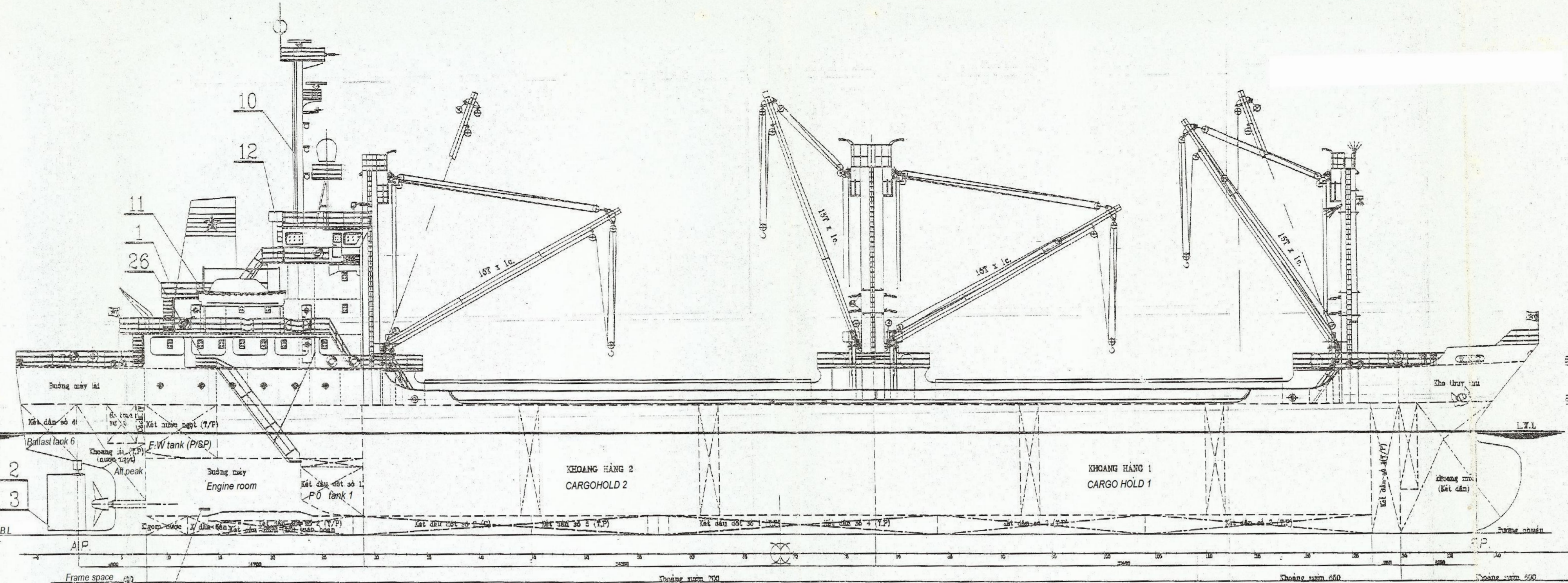
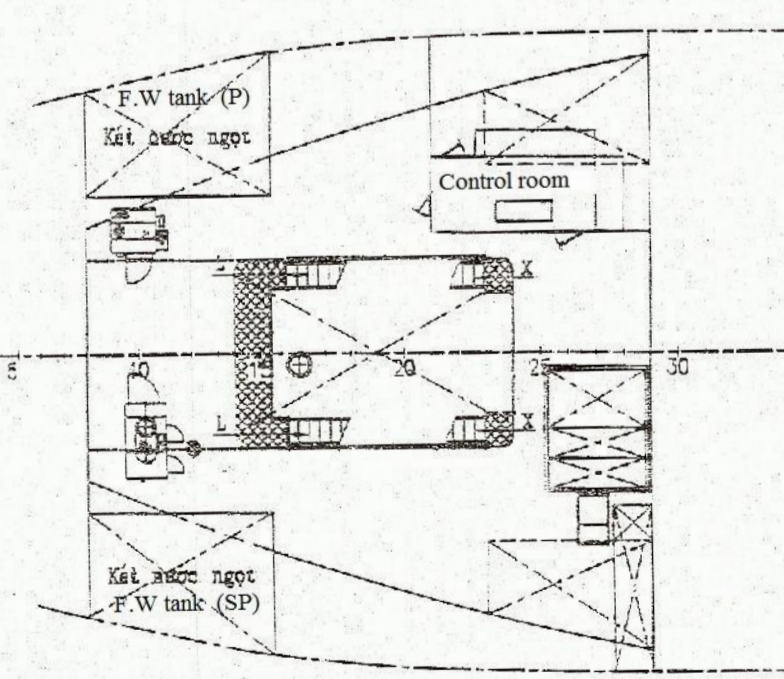
BUỒNG B  
"B" DECK



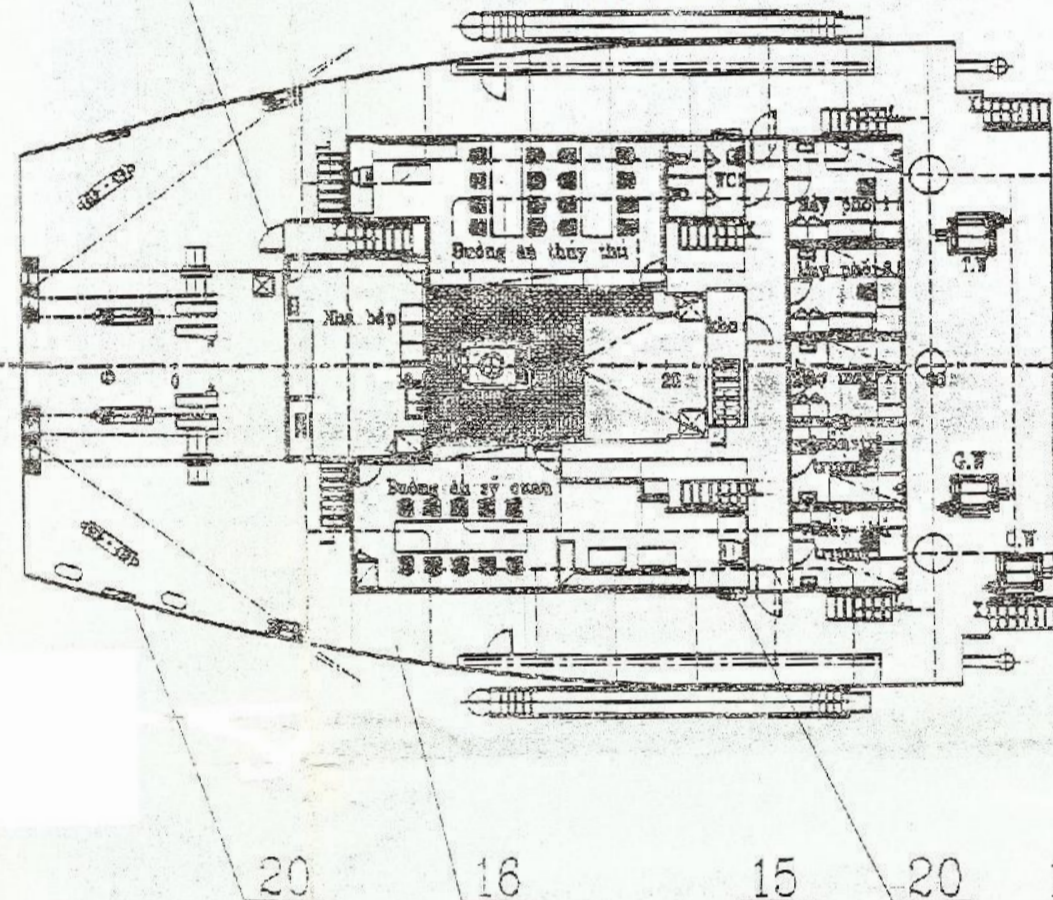
BUỒNG A  
"A" DECK



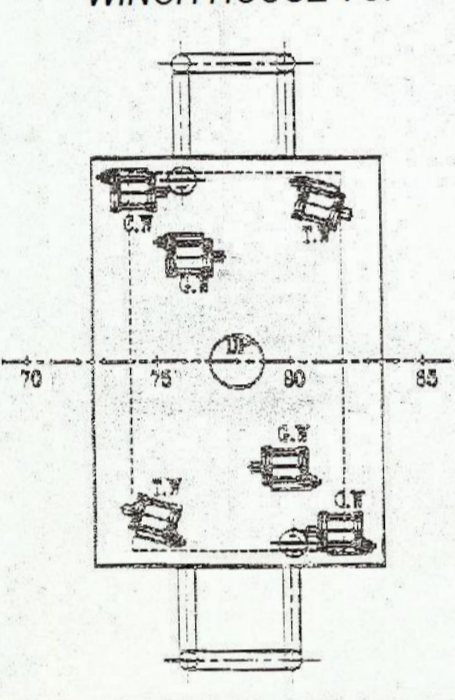
SÀN BUỒNG MÁY  
ENGINE ROOM FLOOR



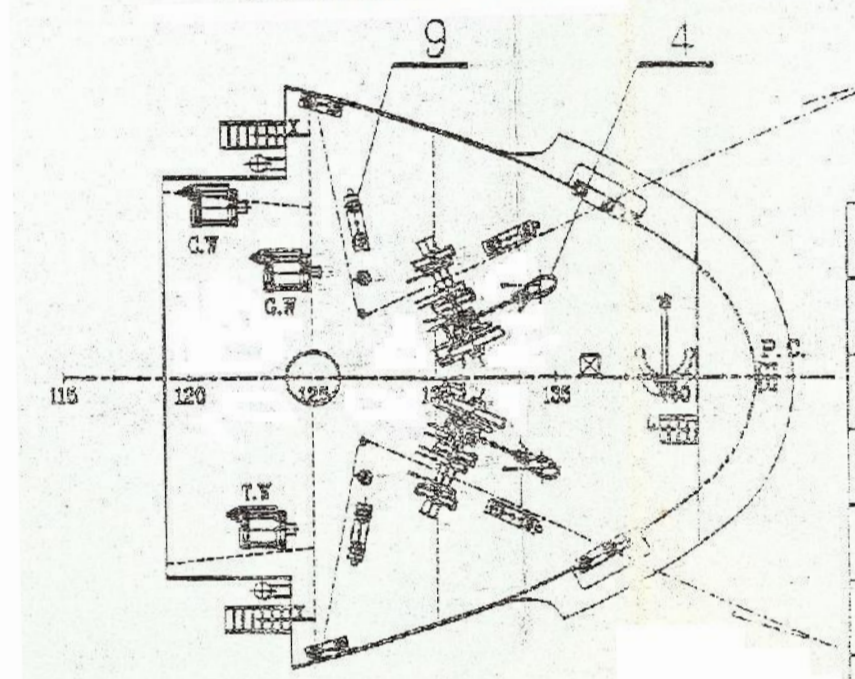
BUỒNG ĐĂNG LÁI  
POOP DECK



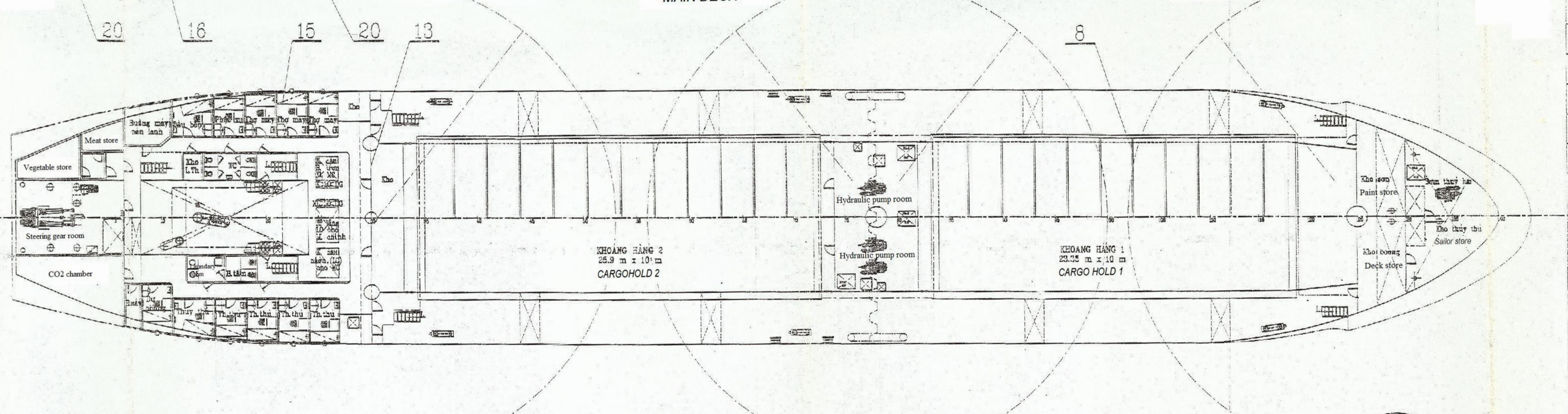
NÓC NHÀ TỜI  
WINCH HOUSE TOP



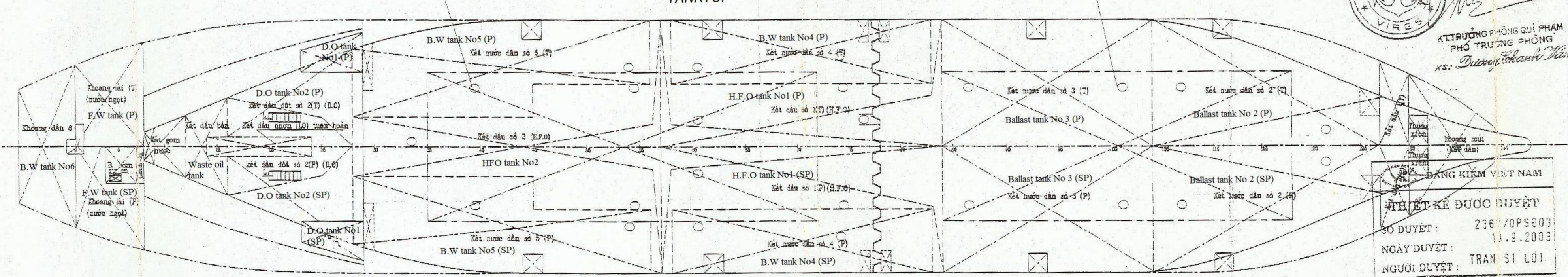
BUỒNG ĐĂNG MŨI  
FORECASTLE DECK



TRÊN BUỒNG CHÍNH  
MAIN DECK



DƯỚI BUỒNG CHÍNH  
TANKTOP



GHI CHÚ :  
- Vị trí các nắp hầm có định chìm đã ghi trên bản vẽ H141/305-02

NOTES:  
- The position of fixed countersunk covers was noted in drawing H141/305-02

28	Rotating Crane 0.5T (for lifting food)		01		Imported
27	Fixed countersunk hole cover	CT3	28		
26	Accommodation ladder	HH	02		
25	Lifeboat	HH	01		
24	Life-rescue boat	HH	01		
23	Life raft	HH	02		
22	Life buoy with line	HH	02		
21	Life buoys with smoke signal	HH	02		
20	Life buoy	HH	04		
19	H141/312-05 Bridge deck interior arrangement	HH	01		
18	H141/312-04 B deck interior arrangement	HH	01		
17	H141/312-03 A deck interior arrangement	HH	01		
16	H141/312-02 Poop deck arrangement	HH	01		
15	H141/312-01 Main deck interior arrangement	HH	01		
14	H141/311-01 Scheme of zinc antirust paint	HH	01		
13	H141/310-01 Heat, sound isolation and fire protection arrangement	HH	01		
12	H141/309-01 Ventilation system	HH	01		
11	H141/307-02 Life saving appliances	HH	01		
10	H141/307-01 Light signal system arrangement	HH	01		
9	H141/306-01 Mooring system	HH	01		
8	H141/305-04 Hatch covers	HH	01		
7	H141/305-03 Ship stairs system	HH	01		
6	H141/305-02 Covers of holes and cut-outs	HH	01		
5	H141/305-01 Doors and windows system	HH	01		
4	H141/304-01 Anchoring system	HH	01		
3	H141/303-02 Aft ship structures and arrangement	HH	01		
2	H141/303-01 Steering system	HH	01		
1	H141/302-02 Guardrail and handrail system	HH	01		

I-40



K. TRƯỞNG PHÒNG QUẢN LÝ PHÁP LÝ  
PHÓ TRƯỞNG PHÒNG QUẢN LÝ PHÁP LÝ  
K. TRƯỞNG PHÒNG QUẢN LÝ PHÁP LÝ

VIỆN KHCN TÀU THỦY  
THIẾT KẾ ĐƯỢC DUYỆT  
SỐ DUYỆT: 236/DPSP03  
NGÀY DUYỆT: 13.3.2003  
NGƯỜI DUYỆT: TRAN SÌ LỢI

N	Symbol	Detail's name	Material	Unit	Set	Notes
		TÀU HÀNG 6300/8500	TL 1:200			Thuyết minh thiết kế H141/302-01
		BỐ TRÍ THIẾT BỊ	KT	3		H141/302-01
		EQUIPMENT ARRANGEMENT				
				SF: 01/01		